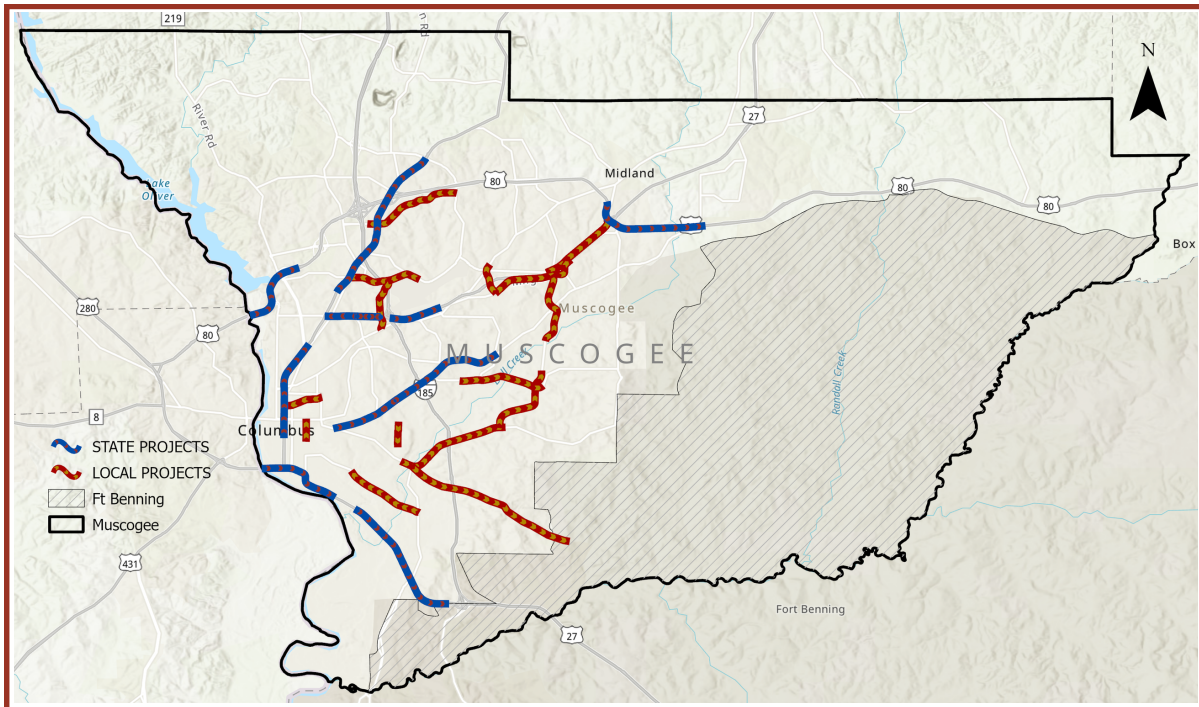


PRIORITY PROJECTS OVERVIEW

PROJECT CORRIDORS



PRIORITY SAFETY PROJECTS

Using crash data and feedback from stakeholders we have identified priority safety corridors.

For each corridor, we conducted a thorough review to identify safety issues and opportunities to implement proven safety countermeasures.

Preliminary safety recommendations for each corridor are displayed on the **Proposed Safety Projects** boards and are organized by **geographic location and maintaining agency (CCG or GDOT)**.

All recommended safety improvements are preliminary and may be subject to additional analysis and public input to determine feasibility

NEXT STEPS...

Following this workshop, the proposed safety projects will be prioritized based on their anticipated safety impact, public feedback, and other factors.

These priority projects, along with policy, program, and process recommendations will be documented in the **Safety Action Plan** that will be finalized this fall.



POLICIES, PROGRAMS, AND PROCESS IMPROVEMENTS

Policies and Administration:

- **Implement Complete Streets Policy:** Continue to implement the City's 2018 Complete Streets Policy through the adoption of context sensitive design standards and developing a committee to track implementation progress
- **Launch a Citywide Crash Review and Response Program:** Establish a structured crash review and response protocol to systematically analyze serious and fatal traffic crashes. The protocol should involve a multidisciplinary team including transportation planners, engineers, law enforcement, EMS, and public health officials
- **Codify Safety in Development Standards:** Integrate roadway safety requirements into zoning codes and development standards within the Unified Development Ordinance (UDO)

Projects and Programs:

- **Establish a Speed Management Program:** Create a program guided by FHWA's Safe Speeds to set context-sensitive speed limits, manage interventions, and address public speeding concerns.
- **Establish a Safe Routes to School (SRTS) Program:** Implement customized interventions around schools using the "Six Es" framework to enhance walking, biking, and traffic safety for students.
- **Establish a Citywide Work Zone Safety Program:** Standardize work zone safety with consistent design, enforcement, and communication to reduce crashes and protect workers and road users.

Coordination and Collaboration:

- **Establish a Safety Task Force:** Form a multidisciplinary task force to coordinate Vision Zero efforts, align agencies, and drive Safe System implementation.
- **Conduct Road Safety Audits (RSA):** Perform data-driven audits in high-crash areas with input from planners, engineers, health professionals, and community members.
- **Coordinate Enforcement Strategies:** Collaborate with fire and law enforcement on joint enforcement, education, and public engagement to advance traffic safety goals.

Do you have any feedback on the proposed policies, programs, and process improvements or have additional ideas? Please add a sticky note below!

SAFETY COUNTERMEASURES

ROADWAY DEPARTURE CRASHES

Occur when a vehicle crosses an edge line, center line, or leaves the traveled way.



Improvements

16% *reduction in non-intersection fatal and injury crashes*

Can include enhanced signage and pavement markings to increase driver awareness of upcoming curves, or changes to curves themselves such as curve realignment or shoulder widening.

Wider Edge Lines

22% *reduction in fatal and injury crashes on rural freeways*



Enhance the visibility of travel lane boundaries. Edge lines are considered "wider" when the marking width is increased from 4 to 6 inches.



Longitudinal Rumble Strips and Stripes on Two-Lane Roads

44-64% *reduction in head-on fatal and injury crashes on rural roads*

Raised elements on the pavement to alert drivers by vibration and sound that the vehicle has left the travel lane. Installed on the shoulder, edge line, and near the center line of an undivided roadway.

INTERSECTION CRASHES

Occur at the point where two or more roads meet or cross. These can include "T-Bone" crashes that are more likely to result in a fatality or serious injury.



Backplates with Retroreflective Borders

15% *reduction in total crashes*

Improve visibility of the illuminated face of the signal by introducing a controlled-contrast background. 1-3 inch yellow border.

Corridor Access Management

25-31% *reduction in fatal & injury crashes*



Design, application, and control of entry and exit points along a roadway.



Roundabouts

78-82% *reduction in fatal and injury crashes*

Intersection with a circular configuration that safely moves traffic. Feature channelized, curved approaches, reduce vehicle speed, give right-of-way, minimizing conflict.

SAFETY COUNTERMEASURES

PEDESTRIAN/BICYCLIST CRASHES

Collisions involving collisions between a vehicle with a bicyclist or pedestrian.



Leading Pedestrian Interval

13% *reduction in pedestrian-vehicle crashes*

A signal timing strategy that allows pedestrians to enter the crosswalk at an intersection 3-7 seconds before vehicles to establish presence in the crosswalk.

Road Diets

19-47% *reduction in total crashes*

Involves re-purposing one or more travel lanes to create space for enhanced bicycle and pedestrian facilities or a median. Typically applicable on four or six lane roadways that are under capacity.



Rectangular Rapid Flashing Beacons (RRFB)

47% *reduction in pedestrian-vehicle crashes*

Used at crosswalks to improve pedestrian visibility and improve driver yielding. Includes amber flashing LED lights that are activated by a pedestrian push button.

Pedestrian Hybrid Beacons (PHB)

55% *reduction in pedestrian crashes*

These enhancements can be installed to increase pedestrian conspicuity and increase driver awareness at crosswalks



CROSSCUTTING CRASHES

Crosscutting countermeasures are applicable to roadway departure, intersection, and pedestrian bicyclist crashes

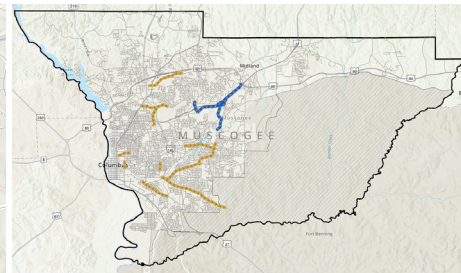
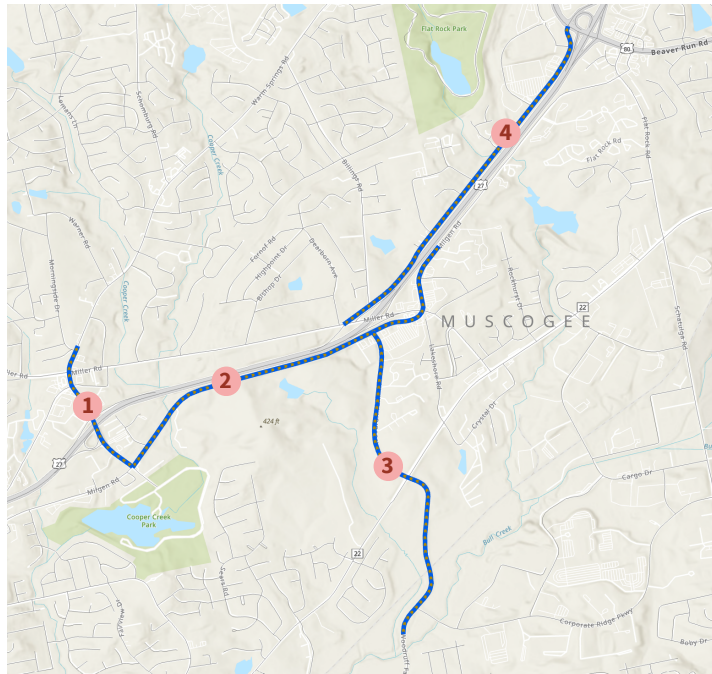


Lighting

28% *Reduction for nighttime injury crashes on rural and urban highways*

Used to improve visibility for all road users. Can be applied along a corridor or at spot locations like signalized intersections. Lighting is especially effective at reducing night-time pedestrian and bicyclist crashes.

PROPOSED SAFETY PROJECTS



Safety Focus Areas

- **Angle Crashes**
(Warm Springs Road Connector, Milgen Road)
- **Roadway Departure Crashes**
(Woodruff Farm Road, Gateway Road)
- **Bicycle Crashes**
(Warm Springs Road Connector)

1

Warm Springs Road Connector

North of Miller Road to Milgen Road

- Fill sidewalk gaps **corridor-wide**.
- Install trail crossing improvements at the **Fall Line Trace Trail**.
- Install pedestrian safety improvements at **Miller Road, Manchester Expressway, and Milgen Road**.
- Install raised median at **Peek Industrial Drive**.

2

Milgen Road

Warm Springs Road Connector to E of Stratford Lane

- Install sidewalks and rumble strips **corridor-wide**.
- Install pedestrian safety improvements at **Miller Road and Woodruff Farm Road**.

3

Woodruff Farm Road

Milgen Road to south of Corporate Ridge Parkway

- Install multi-use path from **Macon Road to Milgen Road**.
- Install rumble strips from **Macon Road to Milgen Road**.
- Install curve safety improvements from north of **Macon Road to north of Corporate Ridge**.

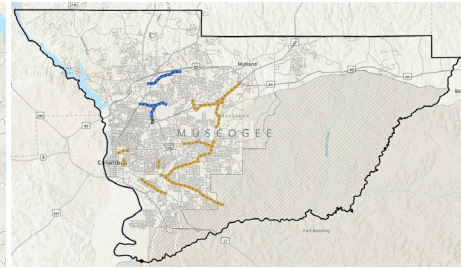
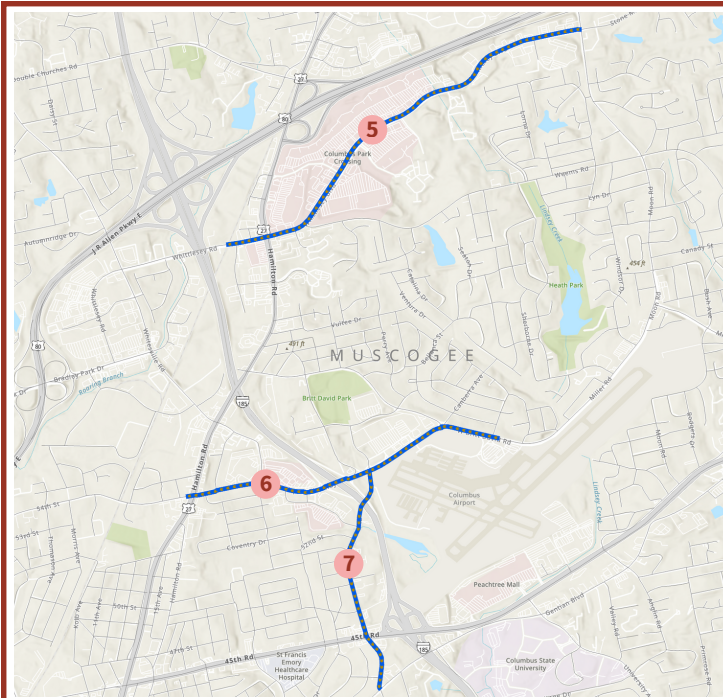
4

Gateway Road

Miller Road to J R Allen Parkway

- Install wide-edge lines **corridor-wide**.
- Install curve safety improvements south of **Coca-Cola Boulevard**.
- Install intersection safety improvements at **Billings Road and Miller Road**.

PROPOSED SAFETY PROJECTS



Safety Focus Areas

- **Angle Crashes**
(Whittlesey, Airport Thruway)
- **Pedestrian Crashes**
(Armour Road)

5

Whittlesey Blvd

West of Veterans
Parkway to Moon Road

- Install lighting at signalized intersections **corridor-wide**.
- Install multi-use path **corridor-wide**.
- Fill sidewalk gaps **corridor-wide**.
- Consider installing a new pedestrian crosswalk with pedestrian hybrid beacons (PHB) **between Weems Road and Adams Farm Drive**.
- Install curve safety improvements from **Adams Farm Drive to Moon Road**.
- Install access management improvements at **Hamilton Park Road, the Walmart Entrance, and Livingston Drive**.

6

Airport Thruway

US 27 to Grumman Ave

- Install sidewalks **corridor-wide**.
- Installed landscaped median from **23rd Avenue to I-185**.
- Consider installing a roundabout at **Britt David Road**.
- Install pedestrian intersection safety improvements at all signalized intersections **corridor-wide**.

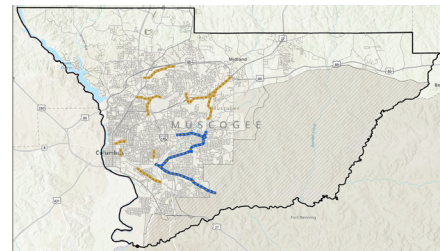
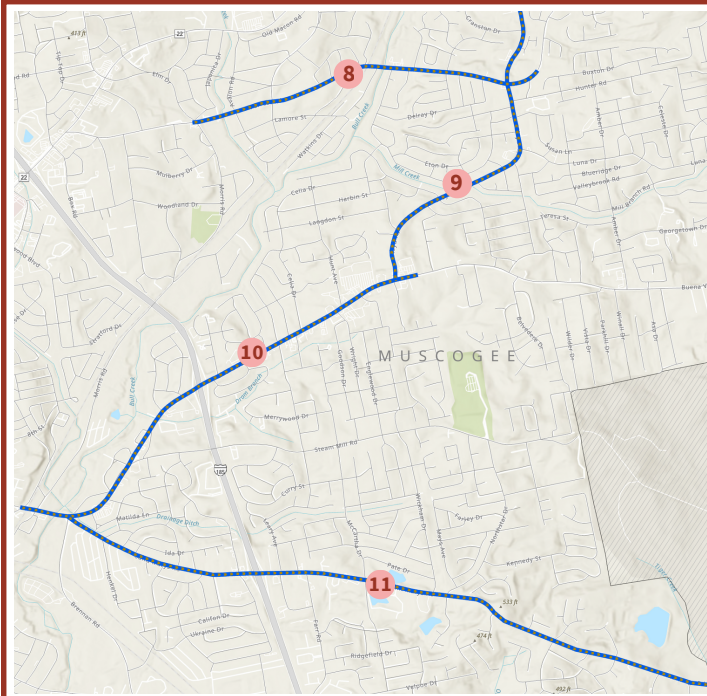
7

Armour Road

Airport Thruway to
Warm Springs Road

- Consider reducing corridor from four lanes to two, and install multi use path **corridor-wide**.
- Fill in missing sidewalk gaps from **Warm Springs Road to I-185**.
- Install pedestrian safety improvements at **Warm Springs Road, Sidney Simons Boulevard, and Manchester Expressway**.

PROPOSED SAFETY PROJECTS



Safety Focus Areas

- **Pedestrian Crashes**
(Floyd Road, Buena Vista Road, Saint Marys Road)
- **Angle Crashes**
(Forrest Road, Buena Vista Road, Saint Marys Road)
- **Roadway Departure Crashes**
(Floyd Road, Saint Marys Road)

8

Forrest Road

*Morris Road to east of
Floyd Road*

- Consider installing a roundabout or traffic signal at **Reese Road**.
- Install curve safety improvements from **Tupelo Drive to Palomino Drive**.
- Install median at **Wesley Drive and east of Morris Road**.
- Install Intersection Safety Improvements at **Welborn Drive and Morris Road**.

9

Floyd Road

*Branton Lane to Buena
Vista Road*

- Consider reducing corridor from four lanes to two, and install multi use path **corridor-wide**.
- Consider a new pedestrian crosswalk with rectangular rapid flashing beacons (RRFB) at **Booth Street**.
- Install Curve Safety Improvements from **Gardiner Drive to Floyd Court**.
- Install pedestrian safety improvements at **Luna Drive, Hunter Road, and Forrest Road**.

10

Buena Vista Road

*MLK Jr Blvd to east of
Floyd Road*

- Install a landscaped median from **Dogwood Drive to Floyd Road**.
- Consider new pedestrian crosswalks with rectangular rapid flashing beacons (RRFB) at **Tennessee Drive and Celia Drive**.
- Install intersection safety improvements at **Floyd Road**.

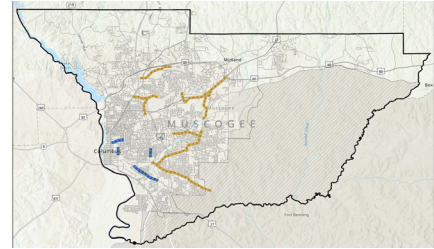
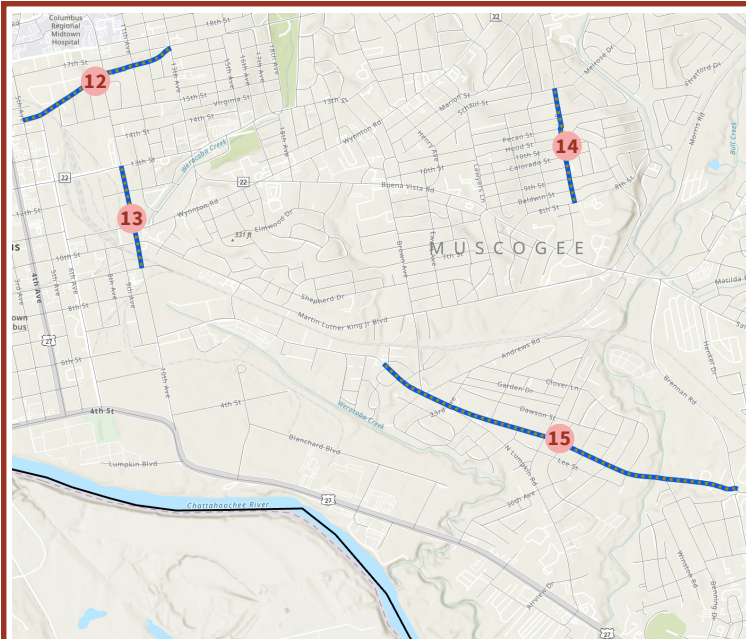
11

Saint Marys Road

*Buena Vista Road to
Tiger Creek*

- Consider reducing corridor from four lanes to two, and install multi use path from **Buena Vista Road to Robin Road**.
- Consider installing pedestrian crosswalks with rectangular rapid flashing beacons (RRFB) at **Meadow Drive, and Nightingale Drive**.
- Consider installing a roundabout at **Leary Avenue**.
- Install pedestrian safety improvements at **Oakley Drive, I-185, and Farr Road**.

PROPOSED SAFETY PROJECTS



Safety Focus Areas

- **Roadway Departure Crashes**
(Rigdon, Cusseta)
- **Angle Crashes**
(10th Ave, Rigdon)
- **Pedestrian & Bicycle Crashes**
(Linwood, Cusseta)

12

Linwood Blvd

5th Avenue to 13th Avenue

- Install multi-use path **corridor-wide**.
- Consider installing a new pedestrian crosswalk with rectangular rapid flashing beacons (RRFB) at **11th Avenue**.
- Install pedestrian safety improvements at **10th Avenue**.

13

10th Avenue

13th Street to 9th Street

- Consider reducing corridor from four lanes to two and install multi-use path **corridor-wide**.
- Install lighting at **13th Street**.
- Install pedestrian safety improvements at **13th Street, Wynnton Road, Martin Luther King Jr Boulevard**
- Consider installing a roundabout at **Wynnton Road**

14

Rigdon Road

Melrose Drive to 8th Street

- Install a multi-use path **corridor-wide**.
- Fill in missing sidewalk gaps from **Rigdon Road to 8th Street**.
- Consider a new pedestrian crosswalk with rectangular rapid flashing beacons (RRFB) at **Rigdon Road**.

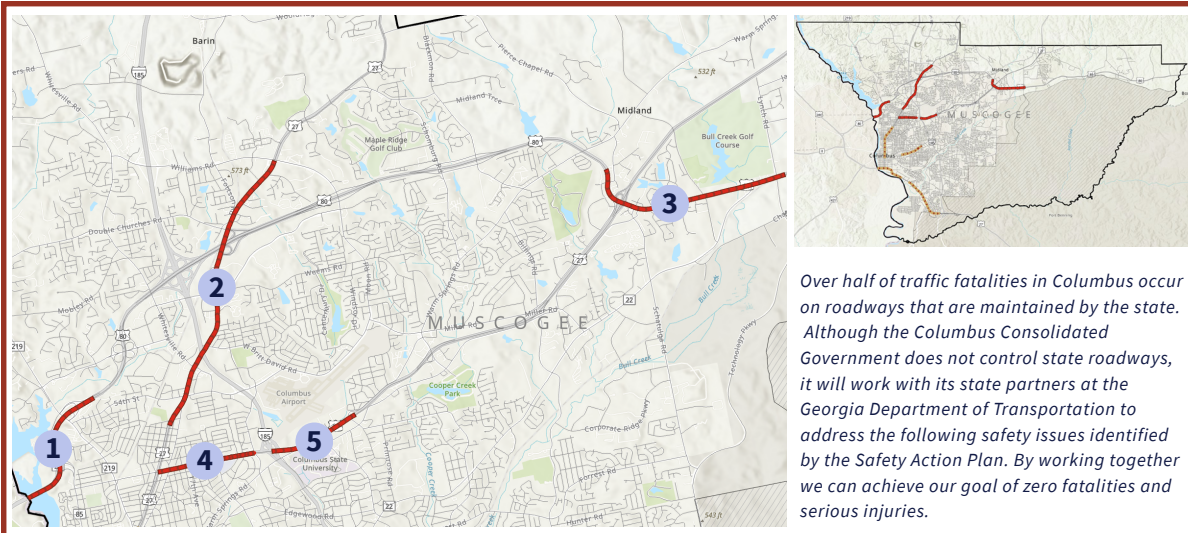
15

Cusseta Road

26th Avenue to Fort Benning Road

- Consider installing new pedestrian crosswalks with rectangular rapid flashing beacons (RRFBs) at **28th Avenue, 30th Avenue, and 32nd Avenue**.

PROPOSED SAFETY PROJECTS



Over half of traffic fatalities in Columbus occur on roadways that are maintained by the state. Although the Columbus Consolidated Government does not control state roadways, it will work with its state partners at the Georgia Department of Transportation to address the following safety issues identified by the Safety Action Plan. By working together we can achieve our goal of zero fatalities and serious injuries.

1

**US 80/J R
Allen Parkway**
*State Line to E of River
Road*

Safety Focus Areas

Roadway departure crashes at curves, particularly during "wet" roadway conditions

Potential Countermeasures

- Curve safety improvements

2

**US 27/Veterans
Parkway**
*Moon Road to Alexander
Street*

Pedestrian crashes at signalized intersections, angle crashes at signalized intersections, angle crashes within two-way-left-turn lane segments

- Pedestrian safety and signal timing improvements at signalized intersections
- Access management
- Sidewalks

3

**US 80/Beaver
Run Road**
*N of Flat Rock Road to
Technology Parkway*

Roadway departure crashes at curve locations, angle crashes at signalized intersections

- Curve safety improvements
- Signal timing improvements
- Sidewalks

4

**US Alt 27/
Manchester
Expressway**
US 27 to Armour Road

Pedestrian crashes at signalized intersections, pedestrian crashes away from signalized intersections, pedestrian crashes at night, left-turn related crashes at signalized intersections

- Pedestrian safety and signal timing improvements at signalized intersections
- New pedestrian crosswalks at high crash and high activity locations
- Lighting

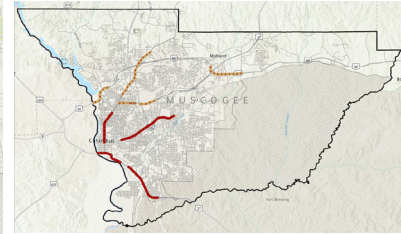
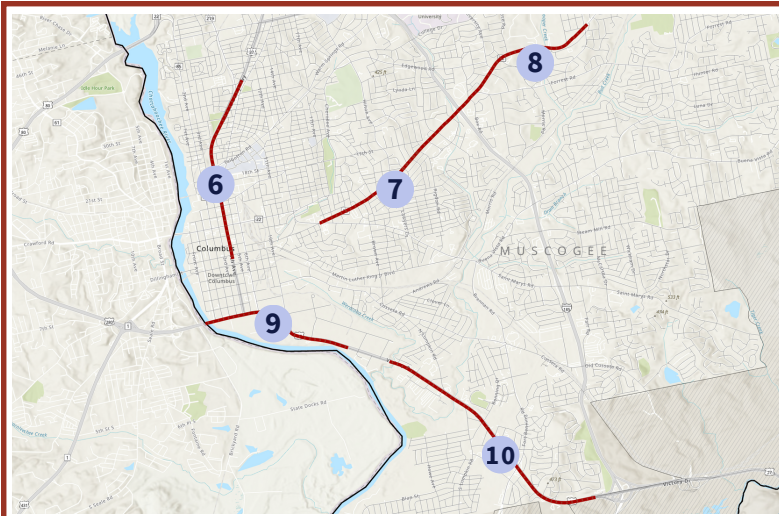
5

**US Alt 27/
Manchester
Expressway**
I-185 to Reese Road

Angle crashes at signalized intersections, roadway departure crashes at I-185 off-ramps

- Pedestrian safety and signal timing improvements at signalized intersections
- Curve safety improvements

PROPOSED SAFETY PROJECTS



Over half of traffic fatalities in Columbus occur on roadways that are maintained by the state. Although the Columbus Consolidated Government does not control state roadways, it will work with its state partners at the Georgia Department of Transportation to address the following safety issues identified by the Safety Action Plan. By working together we can achieve our goal of zero fatalities and serious injuries.

6

US 27/Veterans Parkway

River Road to 10th Street

Safety Focus Areas

Pedestrian crashes at and away from signalized intersections, pedestrian and bicycle crashes at night, angle crashes at signalized intersections.

Potential Countermeasures

- Pedestrian safety and signal timing improvements at signalized intersections
- New pedestrian crosswalks at high crash and high activity locations
- Lighting

7

SR 22/Wynnnton Road

Buena Vista Road to Rigdon Road

Pedestrian crashes at signalized intersections, pedestrian crashes away from signalized intersections angle crashes at unsignalized intersections

- Pedestrian safety improvements at traffic signals
- New pedestrian crosswalks at high crash and high activity locations
- Sidewalks
- Lighting
- Access management

8

SR 22/Macon Road

Rigdon Road to Reese Road

Pedestrian crashes at signalized intersections, angle crashes at unsignalized intersections, roadway departure crashes at curve locations

- Pedestrian safety improvements at signalized intersections, sidewalks
- Access management improvements at unsignalized intersections
- Curve safety improvements

9

US 280/4th Street

State Line to 30th Avenue

Pedestrian crashes at signalized intersections, angle crashes at unsignalized intersections, roadway departure crashes at curve locations

- Pedestrian safety improvements at traffic signals
- Access management
- Curve safety improvements
- New pedestrian crosswalks at high crash and high activity locations
- Lighting

10

US 280/Victory Drive

30th Ave to I-185

Pedestrian crashes at signalized intersections, away from signalized intersections, and at night, angle crashes at unsignalized intersections, roadway departure crashes

- Pedestrian safety improvements at traffic signals
- New pedestrian crosswalks at high crash and high activity locations
- Sidewalks
- Lighting
- Access management



SAFE ROUTES TO SCHOOL EDUCATION PROGRAM

A Calendar of Activities for Safe Routes to School (SRTS) Education was developed for the 2026-27 School Year with a low-budget, community-friendly, and kid-focused programs. This program is intended to offer each school a menu to choose the programs that are most appropriate and useful for each school. Each school has varying levels of capacity and interest in SRTS, and should have the flexibility to choose which programs work best for their students and families.

For the programs that are most useful in Columbus, our team will develop support materials to make it easy for schools to implement these programs. **Please use a sticker dot to vote for the programs that you are most excited about, and therefore would prioritize for support materials.**



2026-2027 Calendar of Activities

August

Focus: "Back to Safe School"

- SRTS Program Kickoff
- Walk & Roll Wednesday (8/5)
- Public Services Announcement Conest
- Text-and-Drive Obstacle Course

January

Focus: "New Year, Safe Start"

- Walk & Roll Wednesday (1/6)
- Safety Pledge Week
- Safety Selfie Contest
- Parent-Teen Safe Driving Night

September

Focus: "Sports Themes"

- Walk & Roll Wednesday (9/2)
- Wear Your Sports Team to School Day
- Neighborhood Speed Watch

February

Focus: "Walking with Friends, Family, and Celebrating Crossing Guards"

- Walk & Roll Wednesday (2/3)
- National Crossing Guard Day (2/10)
- Take your family to school week (2/17-2/21)
- Announce Walk Audit

October

Focus: "Pedestrian Safety"

- National SRTS & National Pedestrian Safety Month
- Walk & Roll Wednesday (10/7)
- National Walk to School Day (10/7)
- National Teen Driver Safety Week (10/19-10/23)
- Costume Walk Parade

March

Focus: "Look Left, Look Right"

- Walk & Roll Wednesday (3/3)
- St. Paddy's Day 5K

November

Focus: "Gratitude for Safety"

- Walk & Roll Wednesday (11/4)
- Gear Drive

April

Focus: "Step Into Spring"

- Distracted Driver Awareness Month
- Walk & Roll Wednesday (4/7)
- National Walking Day (4/7)
- Every Kid Healthy Week (4/19-4/23)
- Run & Roll Relay

December

Focus: "Lights & Visibility Month"

- Walk & Roll Wednesday (12/2)
- Safe Holiday Routes Map
- SRTS Program Community Information Session
- Do Not Disturb While Driving Campaign

May

Focus: "Bike Safety"

- Bike Safety Month
- Global Youth Traffic Safety Month
- Walk & Roll Wednesday (5/5)
- Bike to School Day (5/12)
- Bike to Work Week (5/17-5/21)
- Bike to Work Day (5/21)
- Last Week of School SRTS and WRW Celebration
- Report to School Board on SRTS Activities & Impact

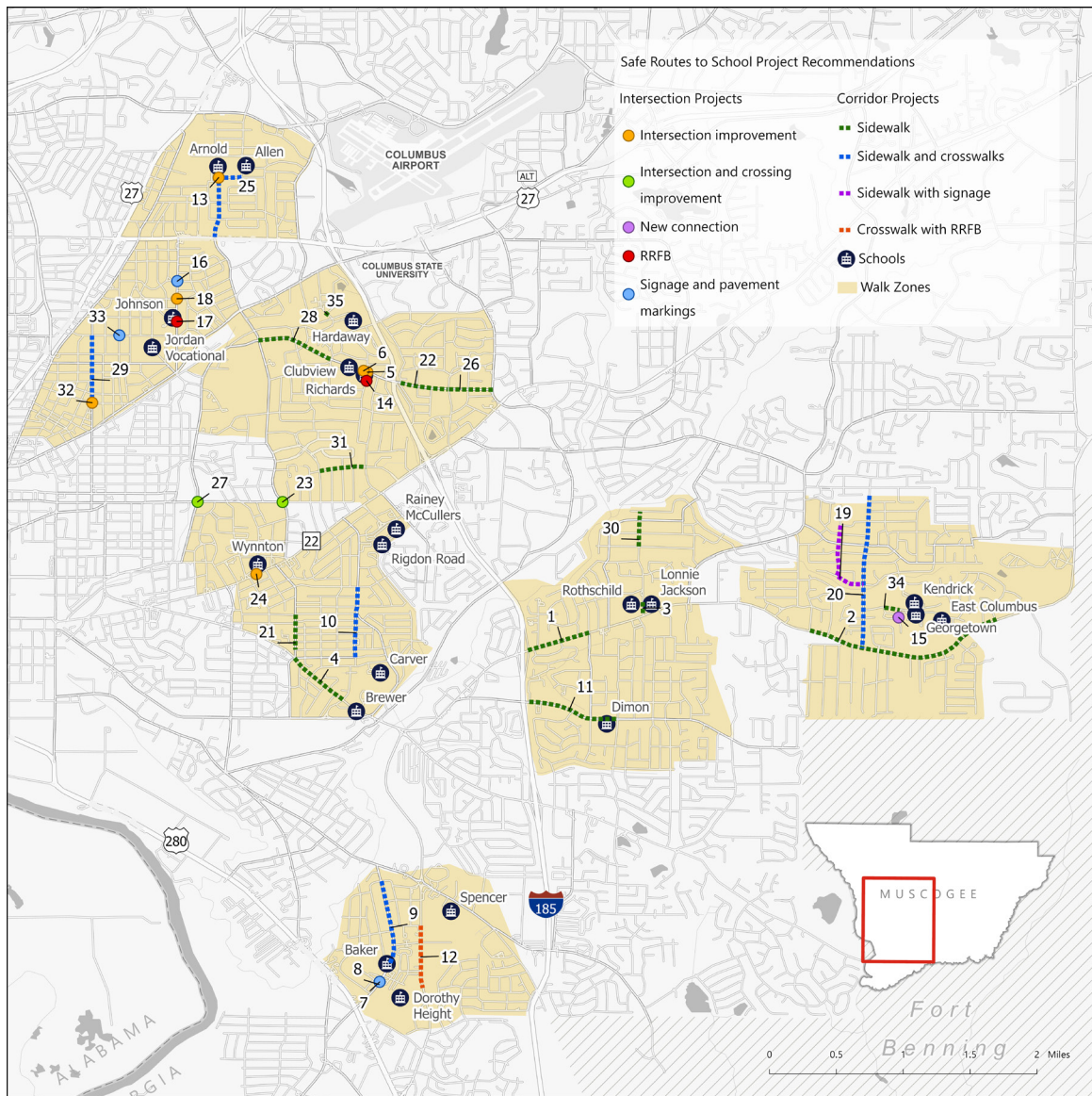
- = Partnership with Local leadership
- = Citywide opportunity
- = Nationally recognized event

Implementation Partners

Partnering with local organizations, such as police/fire departments, bike shops, and neighborhood associations, is recommended. Additional potential partners include:

- Columbus Cultural Arts Alliance
- Bill and Olivia Amos Children's Hospital
- Walk/Run Clubs (Fleet Feet)
- Bike Clubs (bicycle Columbus)
- Boys & Girls Club of the Chattahoochee Valley
- Boy Scouts of America, Troup 91 Chattahoochee Council
- Girls, Inc.
- Easter Seals West Georgia
- Twin Cedars Youth and Family Services
- Safe Teen Driving Academy
- Teens in the Driver Seat
- Georgia DOT - Safe Driving Summit

SAFE ROUTES TO SCHOOL RECOMMENDATIONS



Safe Routes to School Recommendations

The above map shows Safe Routes to School (SRTS) project recommendations that were developed to improve safe access to schools throughout the region. project types include both corridor and intersections projects to provide safe walking and crossing facilities for students, as well as improvements to alert drivers to locations with significant student activity. More information about project locations and details can be found in the Safe Routes to School Recommendations table.



What is YOUR priority?

Place a pin on the SRTS project that is your top priority!



SAFE ROUTES TO SCHOOL RECOMMENDATIONS

Safe Routes to School Recommendations

The following table corresponds with the Safe Routes to School Project Map. The table provides detailed information for the projects that are recommended to improve safe access to schools throughout the region.

ID	Schools Served	Project Area	Potential Safety Countermeasures
1	Rothschild Leadership Academy, Lonnie Jackson Elementary	Buena Vista Rd from I-185 Ramp to Rosewood Dr	Install sidewalks on north side
2	Kendrick High, East Columbus Magnet, Georgetown Elementary	Buena Vista Rd from Watson Dr to Bayberry Dr	Add sidewalk on missing side, repaint crosswalk at Amber
3	Rothschild Leadership Academy, Lonnie Jackson Elementary	Hunt Ave from Buena Vista Rd to Rothschild Driveway	Install sidewalk on both sides
4	Carver High, Brewer Elementary	Buena Vista Road from Baldwin St to Annette Ave	Add sidewalks on missing sides
5	Clubview Elementary, Richards Middle	Edgewood Rd at Sue Mack Dr	Convert existing eastbound to northbound left turn to left + through, or install variable sign allowing through during school drop-off/pick-up hours
6	Clubview Elementary, Richards Middle	Edgewood Rd at Richards Middle Driveway	Targeted enforcement of no left turn from westbound Edgewood into Richards Middle School or install median to block the movement
7	Spencer High, Baker Middle	Benning Dr at Roper Ave	Replace pedestrian sign and repaint crosswalk
8	Spencer High, Baker Middle, Dorothy Height Elementary	Benning Dr from End of trail to Existing sidewalk	Add sidewalk on east side to fill gap
9	Spencer High, Dorothy Height Elementary	Benning Dr from Winston Rd/ Lakeside Dr to Vine St	Add sidewalks on missing side, crosswalks
10	Carver High, Rainey McCullers, Rigdon Road, Wynnton Elementary	Rigdon Rd from Schaul St to Baldwin St	Add sidewalks on missing sides, crosswalks
11	Rothschild Leadership Academy, Dimon Elementary	Steam Mill Road from I-185 to Southern Pines Dr	Install sidewalks on north side of road
12	Baker Middle, Dorothy Height Elementary	Fort Benning Rd from Cusseta Rd to Chapman Way	Crosswalks, RRFB
13	Allen Elementary, Arnold Middle	51st St at Woodruff Rd	Reconfigure intersection to be two side-by-side three-way stops.
14	Clubview Elementary, Richards Middle	Sue Mack Dr at Richards Middle Driveway	Install mid-block crossing
15	Georgetown Elementary	High Ln at Multi-family complex	Open multi-family housing complex gate and add mid-block crosswalk
16	Johnson Elementary	17th Ave at 41st St	Relocate school zone signage closer to school
17	Jordan Vocational High, Johnson Elementary	Woodlawn Avenue at S of 38th st	Add midblock crossing, crosswalk, HAWK or RRFB
18	Jordan Vocational High, Johnson Elementary	17th Ave at 39th St	Evaluate all way stop control
19	Kendrick High, East Columbus Magnet, Georgetown Elementary	Winfield Ln/Mill Branch Rd from Olivia Rd to Amber Dr	Add sidewalks on both sides, install limited sight distance warning sign at Luna Dr
20	Kendrick High, East Columbus Magnet, Georgetown Elementary	Amber Dr from Marlette Ct to Buena Vista Rd	Add sidewalk on missing side, repaint crosswalk at Georgetown Dr
21	Carver High, Rainey McCullers	Lawyers Ln from Bell St to 9th St	Add sidewalks on missing sides
22	Hardaway High, Richards Middle, Clubview Elementary	Edgewood Rd from East Lindsay Dr to Norris Rd	Add sidewalks on north side of Edgewood
23	Wynnton Arts Academy	Hilton Ave at 17th St	Crosswalks, RRFB, address skew
24	Wynnton Arts Academy	Wildwood Ave at Wynnton Rd	Prohibit southbound to eastbound left turns from Wildwood Ave to Wynnton Rd during school drop-off and pick-up
25	Allen Elementary, Arnold Middle	Woodruff Rd/51st St from 45th Rd to 23rd Ave	Add sidewalks on missing sides, crosswalks
26	Hardaway High, Richards Middle, Clubview Elementary	Edgewood Rd from Norris Rd to University Ave	Add sidewalk on north side of Edgewood
27	Wynnton Arts Academy	Cherokee Ave at 17th St	Crosswalks, RRFB, address skew
28	Hardaway High, Richards Middle, Clubview Elementary	Edgewood Rd from Hilton Ave to Clubview Dr	Add sidewalk on north side of Edgewood
29	Jordan Vocational High, Johnson Elementary	12th Ave from 29th St to 35th St	Add sidewalk on missing side, crosswalks
30	Rothschild Leadership Academy, Lonnie Jackson Elementary	Hunt Ave from Langdon St to Gardiner Dr	Install sidewalk on west side of road
31	Hardaway High, Richards Middle	Cross Country Hl from Preston Drive to Marilon Dr	Add sidewalks on both sides of Cross Country Hill
32	Jordan Vocational High	12th Ave at 29th St	Cul-de-sac on Waverly
33	Jordan Vocational High, Johnson Elementary	14th Ave at 35th St	Repaint crosswalks and pavement markings
34	Georgetown Elementary	Georgetown Dr from Driveway to High Ln	Add sidewalk on south side of Georgetown Drive
35	Hardaway High, Richards Middle	Armour Ave from Apartment Driveway to Trail Crossing	Add sidewalk on west side of Armour Ave

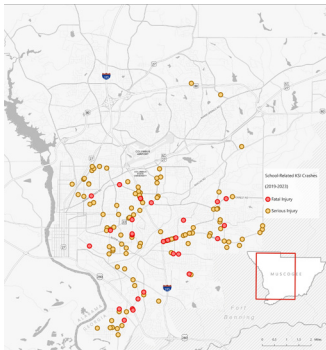


SAFE ROUTES TO SCHOOL PROJECT PRIORITIZATION

After project identification, the prioritization process establishes a suggested order for implementation based on the overall priority determined for each project. The following information outlines the prioritization process.

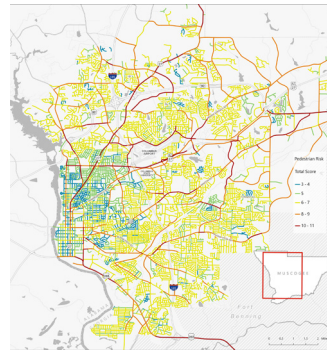
Scoring Criteria

There are six criteria applied to each SRTS project to determine its priority relative to other projects. Each project is evaluated and assigned a score related to each criteria, which is then summed to create the project's Total Priority Score. The criteria scores and Total Priority Scores can be seen on the Safe Routes to School Priority Projects Table.



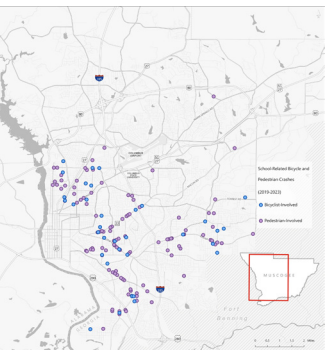
School-Related Fatal & Serious Injury Crashes

Projects are scored based on total crashes with one or more fatalities or serious injuries that occurred during school pick-up or drop-off hours and within 200 feet of the recommended project.



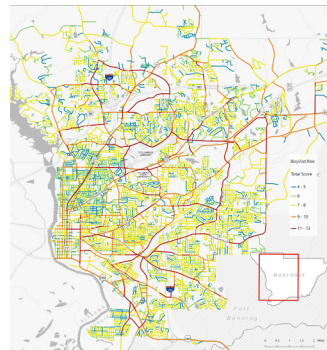
Pedestrian Risk Factor

Projects are scored based on the pedestrian risk factor of the highest risk roadway segment within 200 feet of the recommended project.



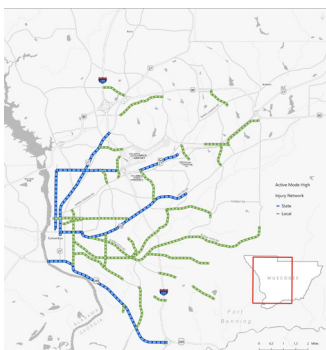
School-Related Pedestrian & Bicycle Crashes

Projects are scored based on total crashes with a pedestrian or bicyclist involved that occurred during school pick-up or drop off hours and within 200 feet of the recommended project.



Bicycle Risk Factor

Projects are scored based on the bicycle risk factor of the highest scoring roadway segment within 200 feet of the recommended project. Higher numbers indicate increased risk for bicyclists.



Active Mode High Injury Network

Projects are scored if the recommended improvement is located on the bicycle and pedestrian High Injury Network (HIN).

High Benefit Score – An optional qualitative factor was included to score projects that have a very low cost and can be implemented quickly, such as repainting pavement markings, replacing faded signs, or addressing very small gaps in the sidewalk or trail network.

Scoring Methodology

For each of the criteria, the range of values from the quantitative analysis was divided into thirds and projects with values in the top third received the highest number of points, the middle third received less points, and the lowest third received the least points.

Evaluation Criteria	Highest Third	Middle Third	Lowest Third
School-related KSI crashes	6 points	4 points	2 points
School-related bicycle and pedestrian crashes	6 points	4 points	2 points
Active Mode HIN	3 points	2 points	1 point
Pedestrian Risk Factor	3 points	2 points	1 point
Bicycle Risk Factor	3 points	2 points	1 point



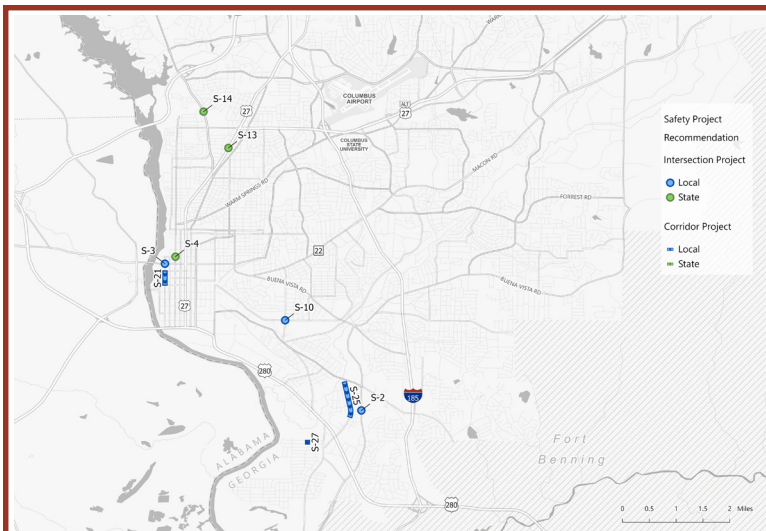
SAFE ROUTES TO SCHOOL PRIORITY PROJECT TABLE

Safe Routes to School Priority Projects

This table represents the results of the preliminary prioritization process that was used to evaluate each SRTS project. A higher Total Priority Score indicates a higher priority project for implementation. These projects can provide a significant benefit to school areas where students may experience safety concerns while traveling to and from school.

ID	Schools Served	Potential Safety Countermeasures	Prioritization Criteria Scoring						Total Priority Score	Notes for High Benefit Score
			KSI Crashes	Bike/Ped Crashes	HIN	Pedestrian Risk Factor	Bicycle Risk Factor	High Benefit Score		
1	Rothschild Leadership Academy, Lonnie Jackson Elementary	Install sidewalks on north side	6	4	3	3	3	0	19	
2	Kendrick High, East Columbus Magnet, Georgetown Elementary	Add sidewalk on missing side, repaint crosswalk at Amber	4	6	1	3	3	0	17	
3	Rothschild Leadership Academy, Lonnie Jackson Elementary	Install sidewalk on both sides	2	2	1	3	3	5	16	Medium cost improvement that addresses observed demand
4	Carver High, Brewer Elementary	Add sidewalks on missing sides	2	6	1	3	3	0	15	
5	Clubview Elementary, Richards Middle	Convert existing eastbound to northbound left turn to left + through, or install variable sign allowing through during school drop-off/pick-up hours	2	2	1	2	3	5	15	Addresses area with a high number of near-misses
6	Clubview Elementary, Richards Middle	Targeted enforcement of no left turn from westbound Edgewood into Richards Middle School or install median to block the movement	2	2	1	2	3	5	15	Addresses area with a high number of near-misses
7	Spencer High, Baker Middle	Replace pedestrian sign and repaint crosswalk	2	2	1	2	3	5	15	Low cost crossing improvement
8	Spencer High, Baker Middle, Dorothy Height Elementary	Add sidewalk on east side to fill gap	2	2	1	2	3	5	15	Low cost connection between apartments and existing trail
9	Spencer High, Dorothy Height Elementary	Add sidewalks on missing side, crosswalks	2	6	1	2	3	0	14	
10	Carver High, Rainey McCullers, Rigdon Road, Wynnton Elementary	Add sidewalks on missing sides, crosswalks	4	2	3	2	2	0	13	
11	Rothschild Leadership Academy, Dimon Elementary	Install sidewalks on north side of road	4	2	1	3	3	0	13	
12	Baker Middle, Dorothy Height Elementary	Crosswalks, RRFB	2	6	1	2	2	0	13	
13	Allen Elementary, Arnold Middle	Reconfigure intersection to be two side-by-side three-way stops.	2	2	1	2	1	5	13	Low cost intersection improvement to address observed conditions
14	Clubview Elementary, Richards Middle	Install mid-block crossing	2	2	1	2	1	5	13	Addresses area with a high number of near-misses
15	Georgetown Elementary	Open multi-family housing complex gate and add mid-block crosswalk	2	2	1	2	1	5	13	Extremely low cost, provides access to existing sidewalks
16	Johnson Elementary	Relocate school zone signage closer to school	2	2	1	2	1	5	13	Extremely low cost, provides better notification of school zone
17	Jordan Vocational High, Johnson Elementary	Add midblock crossing, crosswalk, HAWK or RRFB	2	2	1	2	1	5	13	Low cost crossing improvement that addresses existing demand
18	Jordan Vocational High, Johnson Elementary	Evaluate all way stop control	2	2	1	2	1	5	13	Low cost intersection improvement to mitigate observed speeding
19	Kendrick High, East Columbus Magnet, Georgetown Elementary	Add sidewalks on both sides, install limited sight distance warning sign at Luna Dr	4	4	1	2	1	0	12	
20	Kendrick High, East Columbus Magnet, Georgetown Elementary	Add sidewalk on missing side, repaint crosswalk at Georgetown Dr	2	4	1	3	2	0	12	
21	Carver High, Rainey McCullers	Add sidewalks on missing sides	2	4	1	2	2	0	11	
22	Hardaway High, Richards Middle, Clubview Elementary	Add sidewalks on north side of Edgewood	2	2	1	3	3	0	11	
23	Wynnton Arts Academy	Crosswalks, RRFB, address skew	2	2	1	3	3	0	11	
24	Wynnton Arts Academy	Prohibit southbound to eastbound left turns from Wildwood Ave to Wynnton Rd during school drop-off and pick-up	2	2	3	2	2	0	11	
25	Allen Elementary, Arnold Middle	Add sidewalks on missing sides, crosswalks	2	2	1	3	3	0	11	
26	Hardaway High, Richards Middle, Clubview Elementary	Add sidewalk on north side of Edgewood	2	2	1	3	3	0	11	
27	Wynnton Arts Academy	Crosswalks, RRFB, address skew	2	2	1	2	3	0	10	
28	Hardaway High, Richards Middle, Clubview Elementary	Add sidewalk on north side of Edgewood	2	2	1	2	2	0	9	
29	Jordan Vocational High, Johnson Elementary	Add sidewalk on missing side, crosswalks	2	2	1	2	2	0	9	
30	Rothschild Leadership Academy, Lonnie Jackson Elementary	Install sidewalk on west side of road	2	2	1	2	2	0	9	
31	Hardaway High, Richards Middle	Add sidewalks on both sides of Cross Country Hill	2	2	1	2	1	0	8	
32	Jordan Vocational High	Cul-de-sac on Waverly	2	2	1	2	1	0	8	
33	Jordan Vocational High, Johnson Elementary	Repaint crosswalks and pavement markings	2	2	1	1	1	0	7	
34	Georgetown Elementary	Add sidewalk on south side of Georgetown Drive	2	2	1	1	1	0	7	
35	Hardaway High, Richards Middle	Add sidewalk on west side of Armour Ave	2	2	1	1	1	0	7	

TARGETED WALKING & BIKING SAFETY IMPROVEMENTS



In addition to safety improvements along the State and Local Roadway High Injury Network, active transportation safety improvements were developed to target location that exhibit safety concerns for active mode users and a high density of pedestrian or bicycle crashes

S-2

**Fort Benning Dr
at Baker Plaza Dr**

- Upgrade ADA curb ramps
- Install Leading Pedestrian Interval
- Add design elements, such as brick pattern, to crosswalks
- Install automatic pedestrian detection

S-3

13th St at Broadway

- Convert eastbound left turn to protected phase only.

S-4

SR 85 at 14th St

- Upgrade ADA curb ramps
- Update pavement crossing markings
- Add high-visibility crossing, such as brick design or green pavement, to trail crossing
- Install automatic pedestrian detection
- Add signal head across the NW corner

S-10

**Martin Luther King Jr
Blvd at Brown Ave**

- Remove right turn slip lane
- Upgrade ADA curb ramps
- Add high-visibility pavement marking for trail crossing
- Install Leading Pedestrian Interval

S-13

**US27/Martha Berry
Hwy at Neill Dr**

- Potential for Traffic Calming

S-14

**SR 219/River Rd at
Piggly Wiggly**

- Explore midblock crossing with Pedestrian Hybrid Beacon

S-21

**Broadway
W 10th St to W 12th St**

- Install Leading Pedestrian Interval
- Install automatic pedestrian detection
- Advanced warning signs at midblock crossings

S-25

**Benning Dr
Benning Dr to Vine St**

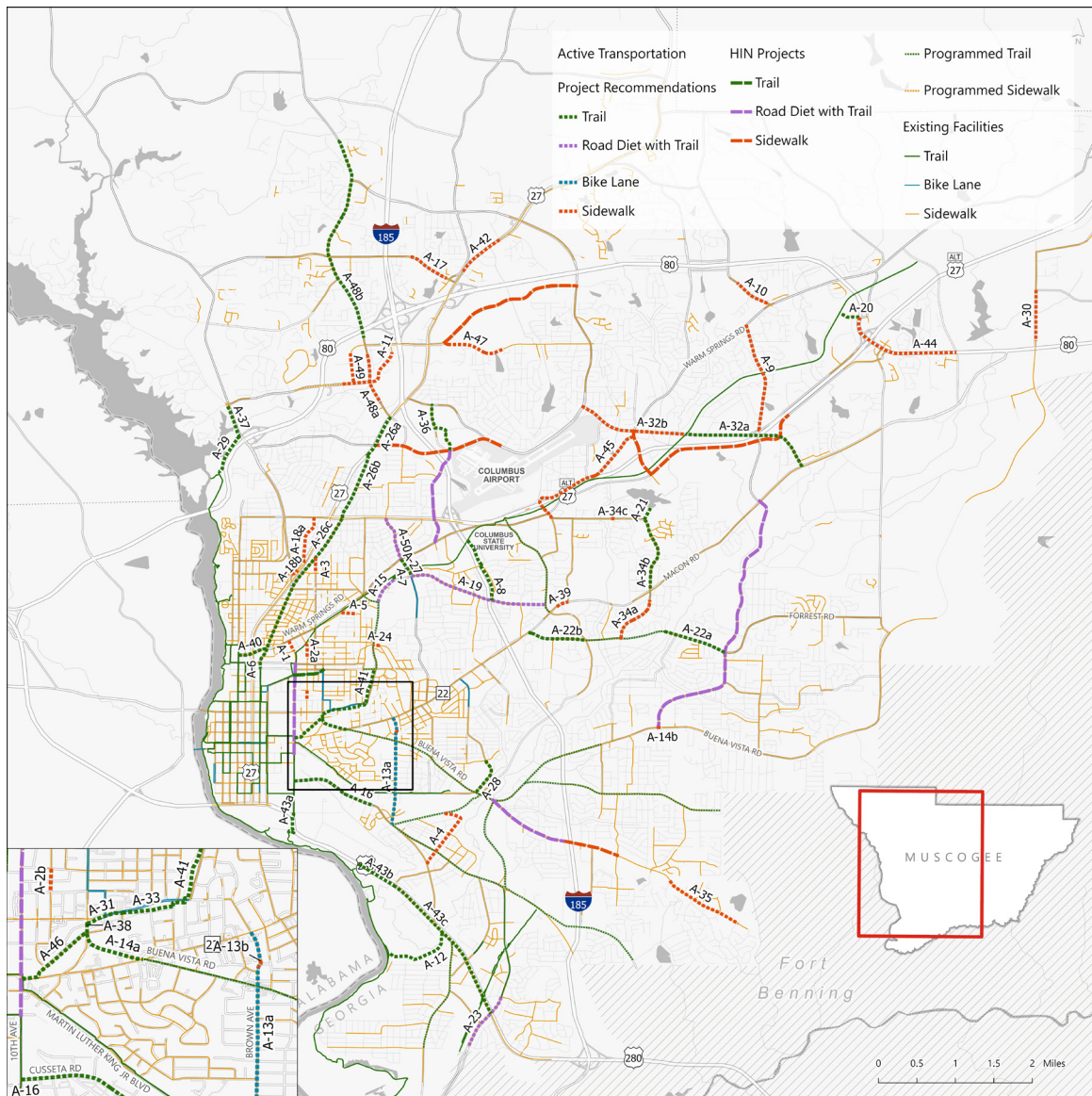
- Improve existing sidewalk facility, including addition of a buffer. Additionally, consider constructing new sidewalk along east side of road.
- Upgrade all existing crossings.

S-27

**Rosemary Ln
Ramsey Rd to
Hawthorne Dr**

- Implement Traffic Calming. Consider all-way stops at intersections with crash history.
- Add high-visibility pavement markings
- Install additional lighting
- Add Sharrow pavement markings.

WALKING & BIKING NETWORK DEVELOPMENT



Walking & Biking Recommendations

Active mode projects were recommended along roadways with safety concerns in order to improve the overall regional network. These projects help to fill gaps in and expand the existing network, providing safe connections to destinations for those walking and biking throughout the region. Facility types include trail, sidewalk, and bike lane. Potential road diet opportunities are also highlighted, creating more opportunities for trail facilities. See the HIN Project boards for more information on HIN Projects



What is YOUR priority?

Place a pin on the active mode project that is your top priority!



WALKING & BIKING NETWORK DEVELOPMENT

Walking & Biking Recommendations

The following tables outline walking and biking projects that are recommended to improve safe active transportation options across the region, including sidewalk, trail, bike lane, and potential opportunities for a road diet with trail.

ID	Project Type	Road Name	From	To	HIN Overlap
A-1	Sidewalk	10th Ave	Talbotton Rd	Center St	Active Mode HIN
A-2a	Sidewalk	11th Ave	Existing trail	19th St	-
A-2b	Sidewalk	11th Ave	14th St	15th St	-
A-3	Sidewalk	12th Ave	Hamilton Rd	35th St	-
A-4	Sidewalk	20th Ave/E Central St	Andrews Rd	N Lumpkin Rd	-
A-5	Sidewalk	28th St	Talbotton Rd	Existing sidewalk east of 16th Ave	-
A-6	Trail	5th Ave	Talbotton Rd	17th St	-
A-7	Trail	Off-street	Cherokee Ave	Existing trail	-
A-8	Trail	Off-street	Edgewood Rd	Existing Trail	-
A-9	Sidewalk	Billings Rd	Warm Springs Rd	Gateway Rd	-
A-10	Sidewalk	Blackmon Rd	Warm Springs Rd	Walmart Driveway	Active Mode HIN
A-11	Sidewalk	Bradley Park Dr	Bradley Park Access Rd	Columbus Children's Dentistry existing sidewalk	-
A-12	Trail	Off-street	US 27/Victory Dr	Rigdon Park existing trail	-
A-13a	Bike Lane	Brown Ave	Wynnton Rd	Cusseta Rd	Active Mode HIN
A-13b	Sidewalk	Brown Ave	Existing sidewalk north of Schaul St	Existing sidewalk south of Schaul St	Active Mode HIN
A-14a	Trail	Buena Vista Rd	Warren Williams Rd	SR 22/Wynnton Rd	Active Mode HIN
A-14b	Sidewalk	Buena Vista Rd	McBride Dr	Walmart	Local HIN, Active Mode HIN
A-15	Road Diet with Trail	Cherokee Ave	Camille Dr	Slade Dr	-
A-16	Trail	Cusseta Rd	10th Ave	20th Ave	Active Mode HIN
A-17	Sidewalk	Double Churches Rd	Double Churches Park driveway	Hamilton St	Active Mode HIN
A-18a	Sidewalk	Earline Ave	37th St	Manchester Expy	-
A-18b	Sidewalk	Earline Ave	35th St	River Rd	-
A-19	Road Diet with Trail	Edgewood Rd	Hilton Ave	University Ave	-
A-20	Trail	Flat Rock Rd	US 80/J R Allen Pkwy E	Existing trail	-
A-21	Trail	Off-street	Reese Rd	Cooper Creek Park trails	-
A-22a	Trail	Forrest Rd	Palomino Dr	Woodruff Farm Rd	Active Mode HIN
A-22b	Trail	Forrest Rd	Macon Rd	Morris Rd	Active Mode HIN
A-23	Road Diet with Trail	Fort Benning Rd	Shelby St	Mathews St	Active Mode HIN
A-24	Sidewalk	Garrard St	Cherokee Ave	Forest Ave	-
A-25a	Sidewalk	Garrett Rd	Jackson Rd	Existing sidewalk north of Aaron Cohn Middle School	-
A-25b	Sidewalk	Garrett Rd	Yarbrough Rd	Existing sidewalk south of Aaron Cohn Middle School	-
A-26a	Trail	Hamilton Rd	Whitesville Rd	Hamilton Rd	State HIN, Active Mode HIN
A-26b	Trail	Hamilton Rd	US 27	Manchester Expy	-
A-26c	Trail	Hamilton Rd	US 27/Manchester Expy	Talbotton Rd	-
A-27	Trail	Hilton Ave	Edgewood Rd	Warm Springs Rd	-



WALKING & BIKING NETWORK DEVELOPMENT

Walking & Biking Recommendations (continued)

ID	Project Type	Road Name	From	To	HIN Overlap
A-28	Trail	Illges Rd	Buena Vista Rd	8th St	Active Mode HIN
A-29	Trail	Lake Oliver Rd	Existing trail	SR 219/River Rd	-
A-30	Sidewalk	Lynch Rd	Garrett Rd	Existing sidewalk north of Macon Rd	-
A-31	Trail	Midway Dr/13th St	SR 22/13th Ave	14th Ave	-
A-32a	Trail	Miller Rd	SR 22	Existing trail	Active Mode HIN
A-32b	Sidewalk	Miller Rd	Moon Rd	Existing trail	-
A-33	Trail	Off-street	14th Ave	18th Ave	-
A-34a	Sidewalk	Reese Rd	Forrest Rd	Old Macon Rd	-
A-34b	Trail	Reese Rd	Cooper Creek park	SR 22	-
A-34c	Sidewalk	Reese Rd	Existing sidewalk east of Castlewood Pkwy	Existing sidewalk west of Castlewood Pkwy	-
A-35	Sidewalk	Saint Marys Rd	Valley Crest Dr	Bunker Hill Rd	Active Mode HIN
A-36	Trail	Smore Dr, Sowega Dr, Armour Rd	Airport Thruway	W Britt David Rd	-
A-37	Trail	SR 219/River Rd	Lake Oliver Rd	Cascade Rd	-
A-38	Trail	SR 22/13th Ave	Warren Williams Rd	Midway Dr	Active Mode HIN
A-39	Sidewalk	SR 22/Macon Rd	Primrose Rd	Eastgate Plaza	Active Mode HIN
A-40	Trail	Talbotton Rd	SR 85	Hamilton Rd	-
A-41	Trail	Off-street	18th Ave	17th St	-
A-42	Sidewalk	US 27/Hamilton Rd	Tower Rd	N Lake Pkwy	State HIN
A-43a	Trail	US 27/US 280/Martha Berry Hwy/Victory Dr	10th Ave	Lumpkin Blvd	State HIN, Active Mode HIN
A-43b	Trail	US 27/US 280/Martha Berry Hwy/Victory Dr	30th Ave	22nd Ave	Active Mode HIN
A-43c	Trail	US 27/US 280/Martha Berry Hwy/Victory Dr	30th Ave	Fort Benning Rd	State HIN, Active Mode HIN
A-44	Sidewalk	US 80/Beaver Run Rd	Flat Rock Rd	Psalmnd Rd	State HIN
A-45	Sidewalk	Warm Springs Rd	Reese Rd	Warm Springs Connector	-
A-46	Trail	Warren Williams Rd/ Wynnton Rd	Buena Vista Rd	10th Ave	-
A-47	Sidewalk	Weems Rd	Whittlesey Blvd	Summerchase Way	-
A-48a	Sidewalk	Whitesville Rd	School Business Rd	Rivertown Rd existing sidewalk	-
A-48b	Trail	Whitesville Rd	Headquarter Nissan existing sidewalk	Bridgemill Dr	-
A-49	Sidewalk	Whittlesey Rd	Bradley Park Dr	Rivertown Pre-Owned Vehicles existing sidewalk	-
A-50	Road Diet with Trail	Woodruff Rd	Manchester Expy	Warm Springs Rd	Active Mode HIN